

# INSPIRATIONAL

EXPOLINC CLASSIC FRAME & LIGHT FRAME



2020 |

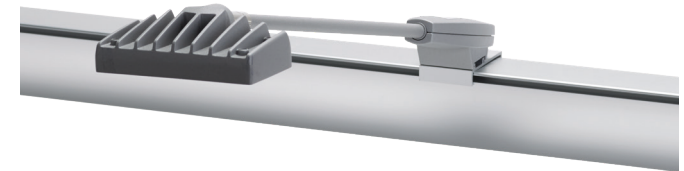
**expolinc**



## EXPOLINC CLASSIC FRAME

# High performance display system

Let us introduce Expolinc Classic Frame. It requires no tools or specialized labor to setup. The unique magnetic connectors guide you to a smooth, stable and safe installation. The systems design consists of smooth, rounded edges along with profiles with high surface finish for a stylish environment. The Expolinc Classic Frame system - Whether you need a simple backwall or an advanced environment.







Magnetic clutch.  
Assembling made simple.



LAYOUT



1 000 X 2 000 mm  
2 m<sup>2</sup>



3 pcs Expolinc Classic Frame 0,95 m (height 2,5 m),  
1 pair double sided stabilizing feet, LED spotlight.

SIMPLE BUT  
EYE-CATCHING



LAYOUT



3 000 X 3 000 mm  
9 m<sup>2</sup>

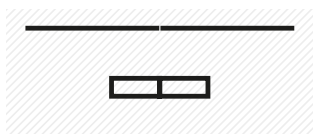


2 pcs Expolinc Classic Frame 2,95 m (height 2,5 m),  
1 pc Standard Case, 1 pair double sided  
stabilizing feet. LED spotlight optional.

# Modular and stable.



## LAYOUT



2 000 X 6 000 mm  
12 m<sup>2</sup>

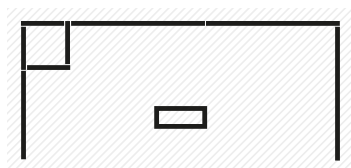


2 pcs Expolinc Classic Frame 2,95 m (height 2,5 m), 1 pc Expolinc Frame Counter 2 m,  
2 pcs single sided stabilizing feet. LED Spotlights.

# Portable and tool less



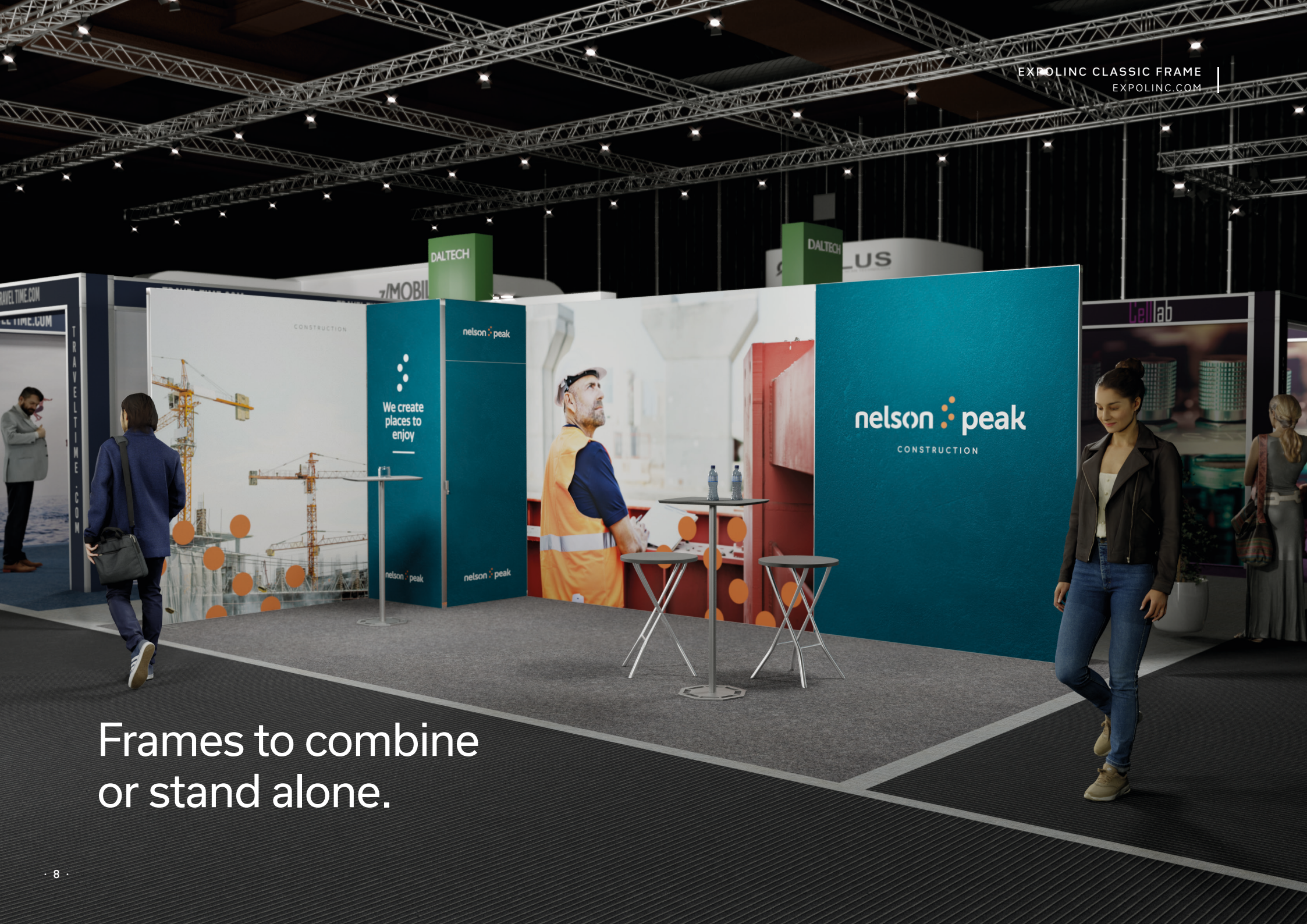
## LAYOUT



3 000 X 7 000 mm  
21 m<sup>2</sup>



1 pc Expolinc Classic Frame 1,95 m (height 2,5 m), 2 pcs Expolinc Classic Frame 2,95 m (Height 2,5 m), 3 pcs Expolinc Classic Frame 0,95 m (1 pc height 2,5 m, 2 pcs height 1,2 m - special solution), 1 pc Storage room - left hung door, 1 pc Expolinc Frame Counter 1 m, 3 pcs single sided stabilizing feet. LED spotlight optional.

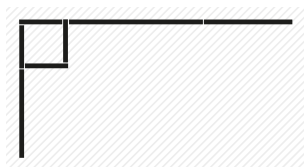


Frames to combine  
or stand alone.

## COUPLED WITH STORAGE



### LAYOUT



3 000 X 6 000 mm  
18 m<sup>2</sup>

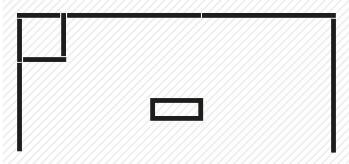


2 pcs Expolinc Classic Frame 1,95 m (height 2,5 m), 1 pc Expolinc Classic Frame 2,95 m (Height 2,5 m),  
1 pc Storage room - right hung door, 2 pcs single sided stabilizing feet, LED spotlights.

BUILD COMPLEX AND  
FLEXIBLE SOLUTIONS



LAYOUT



3 000 X 7 000 mm  
21 m<sup>2</sup>

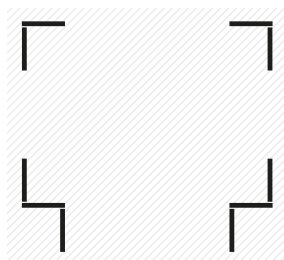


1 pc Expolinc Classic Frame 1,95 m (height 2,5 m), 3 pcs Expolinc Classic Frame 2,95 m (Height 2,5 m), 1 pc Storage room - left hung door, 1 pc Expolinc Frame Counter 1 m, 3 pcs single sided stabilizing feet. LED spotlights optional.



Endless  
possibilities.

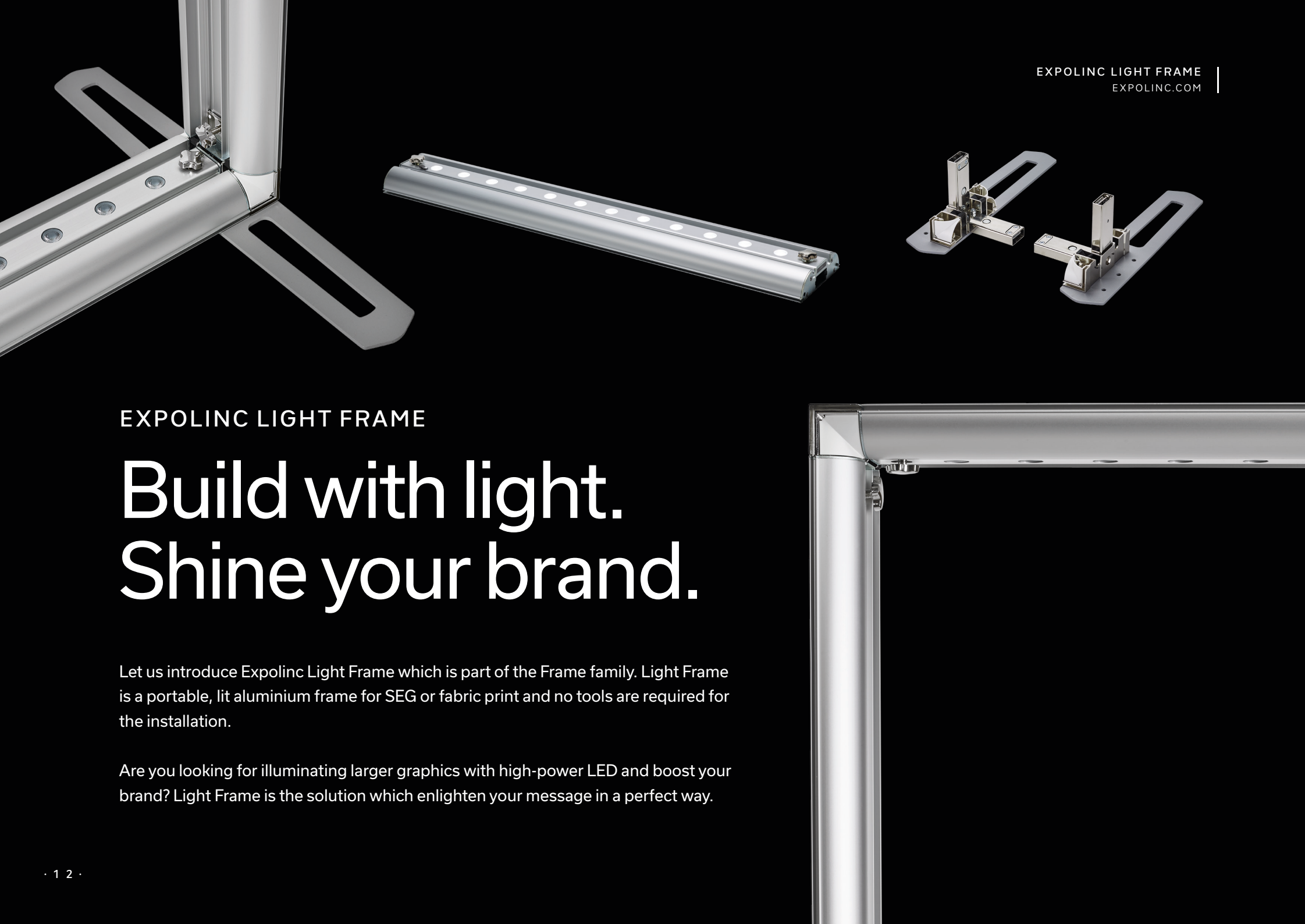
LAYOUT



5 000 X 5 500 mm  
27,5 m<sup>2</sup>



10 pcs Expolinc Classic Frame 0,95 m (height 2,5 m), 2 pcs Brochure Stands,  
2 pcs Portable Tables, 6 pcs single sided stabilizing feet.



## EXPOLINC LIGHT FRAME

# Build with light. Shine your brand.

Let us introduce Expolinc Light Frame which is part of the Frame family. Light Frame is a portable, lit aluminium frame for SEG or fabric print and no tools are required for the installation.

Are you looking for illuminating larger graphics with high-power LED and boost your brand? Light Frame is the solution which enlighten your message in a perfect way.

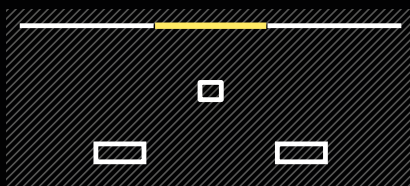


Fully integratable  
with Classic Frame.

# Light Frame. For your brightest moments.



## LAYOUT



3 000 X 8 500 mm  
25,5 m<sup>2</sup>

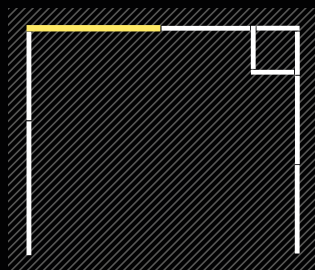


2 pcs Expolinc Classic Frame 2,95 m (height 2,5 m), 1 pc Expolinc Light Frame 1,84 m (height 3,0 m), 2 pcs Expolinc Frame Counter 1 m, 1 pc Standard Case, 2 pcs Brochure Stands, 4 pcs single sided stabilizing feet.

## WORLD CLASS LIGHT QUALITY



### LAYOUT



6 000 X 5 000 mm  
25 m<sup>2</sup>



1 pc Expolinc Classic Frame 4,95 m (height 2,5m), 1 pc Expolinc Classic Frame 3,95 m (height 2,5m), 1 pc Expolinc Light Frame 2,71 m (height 2,5m), 1 pc Expolinc Classic Frame 1,95 m (height 2,5m), 1 pc Storage Room - left hung door, 2 pcs double sided stabilizing feet.



The choice is yours.  
Build whatever.



Join the team.  
Apply now.



Biomedics

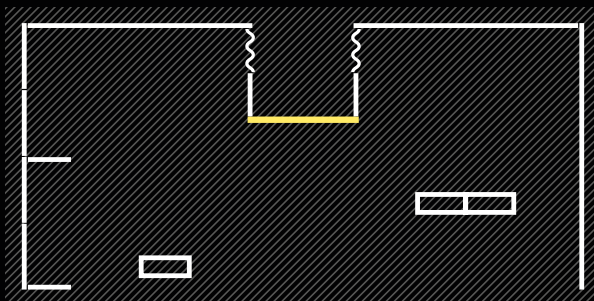


STOCKING

# Powerful LED lights embedded.



LAYOUT



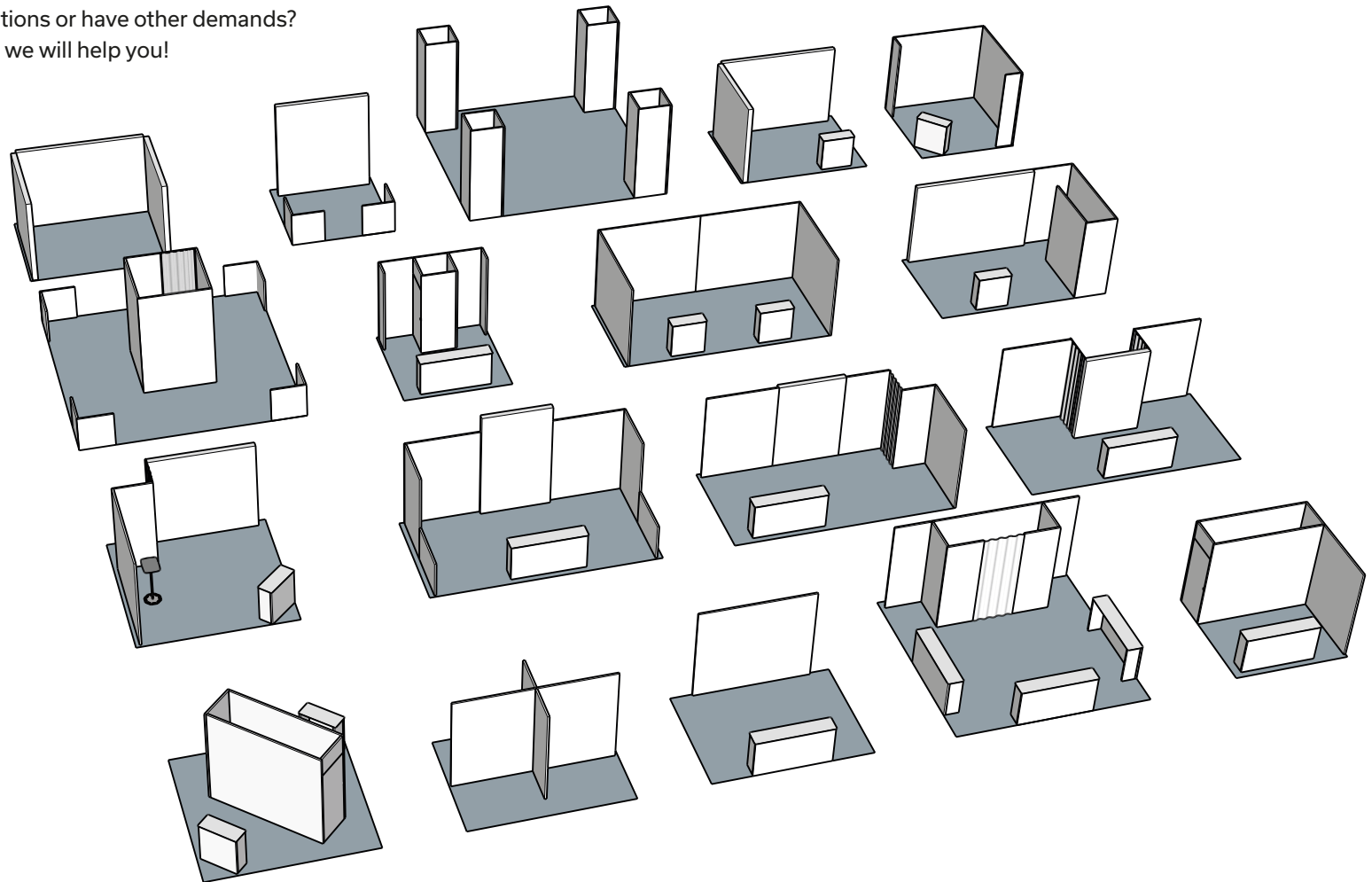
4 000 X 12 000 mm  
44 m<sup>2</sup>



8 pcs Expolinc Classic Frame 0,95 m (height 2,5 m), 1 pc Expolinc Classic Frame 3,95 m (height 2,5 m), 2 pcs Expolinc Classic Frame 4,95 m (height 2,5 m), 1 pc Expolinc Light Frame 1,84 m (height 2,5 m), 1 pc Expolinc Frame Counter 1m, 1 pc Expolinc Frame Counter 2m, 1 pc Brochure Stand.

# More configurations

Combine Expolinc Light Frame and Classic Frame and create amazing environments, for all opportunities. Both Expolinc Frame systems are fully integrated, as stand alone and in stand environments. Expolinc Light Frame is divideable but still extremely solid and stable. Do you need further solutions or have other demands? Please contact us or your dealer and we will help you!





# The choice is yours. Build whatever.

Since 1986, we have designed and crafted high performance display systems with passion behind every detail. Every part is designed in Sweden by our dedicated engineers focusing on simplicity, high tolerance, durability and appearance.

We are committed to deliver superior products made by materials such as specified aluminium with high surface finish, cold formed steel and high quality thermoplastics.

EXPOLINC.COM

