



Collection | 2023

HIGH PERFORMANCE
DISPLAY SYSTEMS

This is Expolinc



We are the hardware people!

We do not print and therefore we do not sell direct to end-users. We are happy to direct end-users to our many professional dealers worldwide!

Everything that we offer is developed by us!

That is a security for any user, we are in full control. We don't source any products from third party suppliers.

It is important that it looks nice!

We strongly believe that it's so important for the end result that the products are neutral and that the graphic hangs perfect. That's the whole purpose - putting the user in the best of lights!

User-friendliness is key!

If you are struggling with set-up, the end result is at risk! We make sure our products are intuitive and user-friendly. It should be fun to set-up our products, for everyone... and of course with a perfect result!

Life time is economy and sustainability!

The best materials and designs enable you to reuse our products for a long, long time! We put attention to every detail, both in design and production.

It's all heart!

All of us at Expolinc are passionate about our business and we are so proud that many of the world-wide brands are users of our products. For more than 35 years!

Our products



LIGHT FRAME
4 - 9



NEW! LIGHT FRAME MINI
10 - 11



NEW! LIGHT FRAME COUNTER
12



CLASSIC FRAME
13 - 18



FABRIC SYSTEM
19 - 22



POP UP MAGNETIC
23 - 27



SOFT IMAGE
28 - 30



PANEL BASE
31



MAGNET FRAME
32



NEW! FABRIC STAND
33



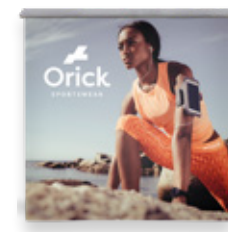
ROLL UP CLASSIC
34 - 35



ROLL UP COMPACT
36 - 37



4 SCREEN CLASSIC
38 - 39



INFO COUNTER
40



STANDARD CASE
41



CASE & COUNTER
42 - 43



BROCHURE STAND
44



NEW! MONITOR STAND
45



INFO STAND & PORTABLE TABLE
46 - 47

Light Frame

Build with light. Shine your brand.

Let us introduce Light Frame which is part of the Frame family. Light Frame is a portable, backlit aluminium frame for SEG, fabric print and no tools are required for the installation.

Are you looking for illuminating larger graphics with high-power LED and boost your brand? Light Frame is the solution!



Safety tested and approved by Intertek according to:
European Union Standards (CE):
IEC 60598-2-1:1979+A1, EN 60598-1:2015+A1, EN 60598-2-1:1989, IEC 60598-1:2014/AMD1:2017, IEC 62031
IEC 62471:2006



Safety tested and approved by Intertek according to:
North American Standards (ETL):
CSA C22.2#250.0:2018 Ed.4, UL 153:2014 Ed13+R27 Jul2018

Light Frame

- WORLD CLASS LIGHT QUALITY
- CERTIFIED ACCORDING TO CE AND ETL
- INTEGRATABLE WITH CLASSIC FRAME
- MODULAR AND STABLE
- DOUBLE SIDED



Watch the movie about
Light Frame at expolinc.us



BASIC PACKAGE

37.7x98.4 inches	62 lbs
72.4x98.4 inches	76 lbs *
106.7x98.4 inches	90 lbs *
141.3x98.4 inches.....	104 lbs **

The packages includes a complete light frame incl
double sided supporting feet, delivered in boxes.
*Incl. 1 supporting rod. **Incl. 2 supporting rods.



TRAVEL PACKAGE

37.7x98.4 inches	62 lbs
72.4x98.4 inches	77 lbs *
106.7x98.4 inches	90 lbs *
141.3x98.4 inches.....	104 lbs **

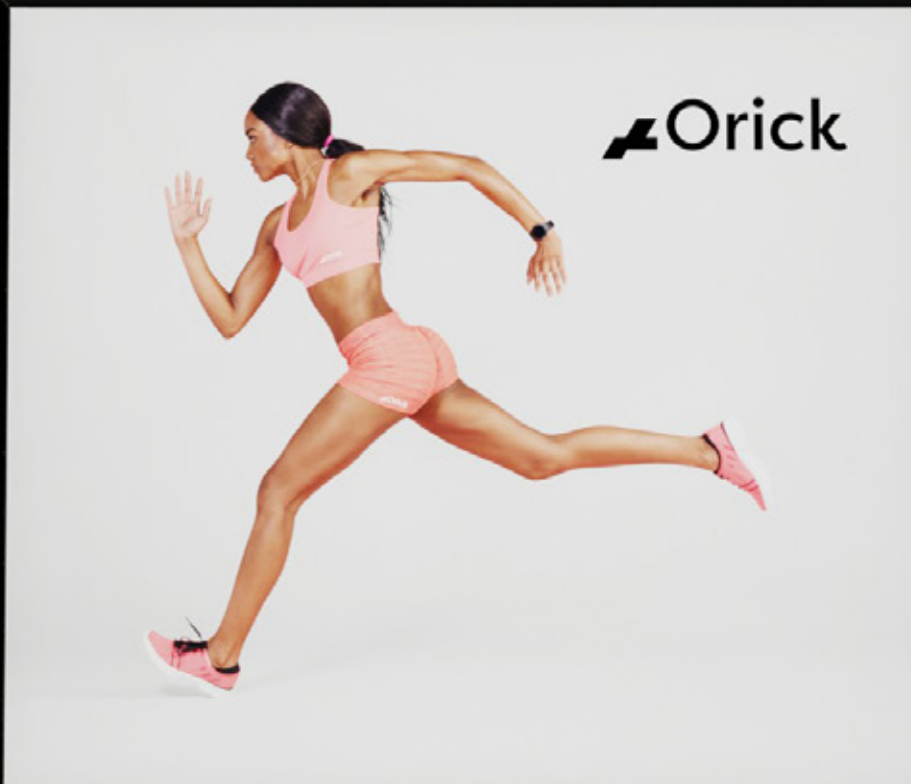
The packages includes a complete light frame incl
double sided supporting feet, delivered in a soft bag with wheels and accessory bag
*Incl. 1 supporting rod. **Incl. 2 supporting rods.



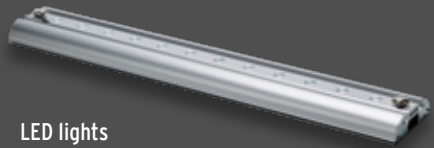
STANDARD CASE PACKAGE

72.4x98.4 inches	90 lbs *
106.7x98.4 inches	105 lbs *
141.3x98.4 inches.....	119 lbs **

The packages includes a complete light frame incl
double sided supporting feet, delivered in Standard Case and accessory bag.
*Incl. 1 supporting rod. **Incl. 2 supporting rods.



Light Frame Powerful LED lights embedded



LED lights
protected in light profile
section. Optimized profile gives even reflection.



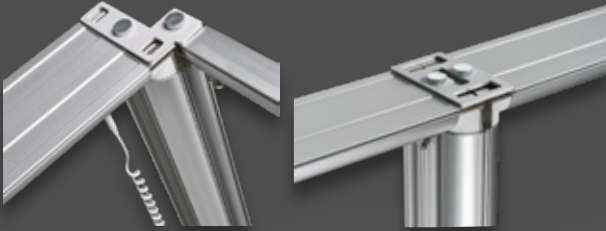
Robust and easy-to-use connector
gives excellent stability.

Build flexible and complex solutions.

Combine Light Frame and Classic Frame to create amazing environments. Build various heights and widths in different combinations in only a few steps. Reuse and resize for your next event, the only thing you might need to replace is the graphic. This is what we call sustainable and flexible!

CONNECTORS

Connect frames, with or without lights, straight or in angle.



SUPPORTING FEET

Single sided or double sided foot depending on your need.

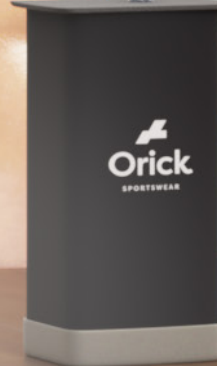


Light Frame
connected with Classic Frame.





SPORTSWEAR





Light Frame Mini

Probably the most elegant light frame on the market

Shine your brand wherever you go.
Quick assembly in a few minutes and make
your brand stand out from competitors.



Safety tested and approved by Intertek according to:

European Union Standards (CE):

IEC 60598-2-1:1979+A1, EN 60598-1:2015+A1, EN 60598-2-1:1989, IEC 60598-1:2014/AMD1:2017, IEC 62031
IEC 62471:2006



Safety tested and approved by Intertek according to:

North American Standards (ETL):

CSA C22.2#250.0:2018 Ed.4, UL 153:2014 Ed13+R:27 Jul2018

Light Frame Mini

- INTEGRATED WORLD CLASS LED LIGHTS
- PLUG AND PLAY TECHNOLOGY
- PORTABLE AND TOOLLESS
- STYLISH DESIGN WITH HIGH FINISH
- CE AND ETL CERTIFICATES



Watch the movie about
Light Frame Mini at expolinc.us



Optional Soft bag with wheels.



Quick slide together assembly.



Led lights integrated and protected.



Integrated driver.



FACTS LIGHT FRAME MINI

Width (inches)	39
Height (inches)	78

Light Frame Counter

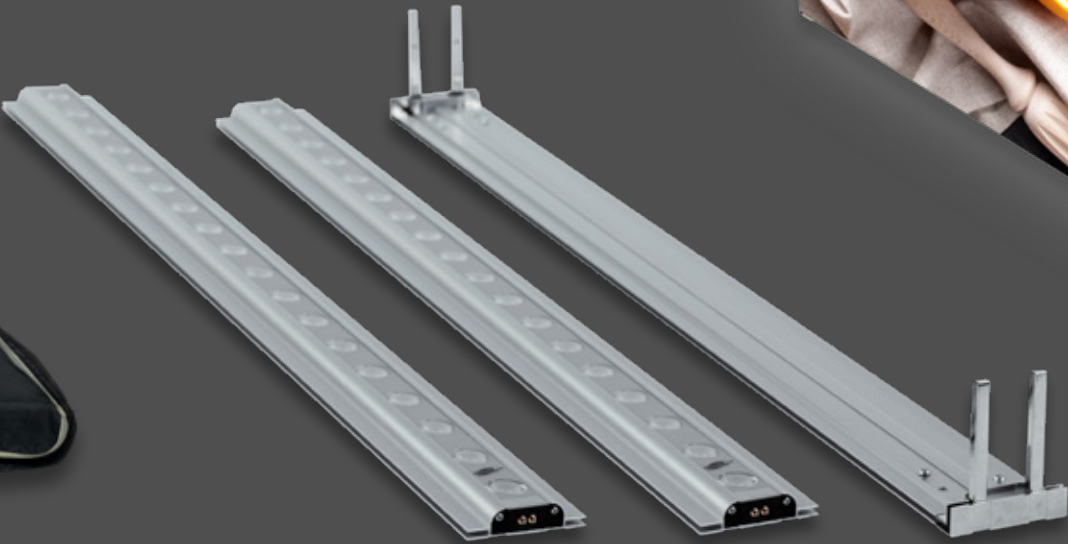
Perfect match for your backlit walls

Get that extra attention to your meeting place with a stylish backlit counter. This unique system is easy to transport and assemble. Use it together with back walls or let it shine by itself!

- INTEGRATED WORLD CLASS LED LIGHTS
- PLUG AND PLAY TECHNOLOGY
- PORTABLE AND TOOLLESS
- STYLISH DESIGN WITH HIGH FINISH
- CE AND ETL CERTIFICATES



Delivered in soft bag with wheels.



Integrated driver.

FACTS LIGHT FRAME COUNTER

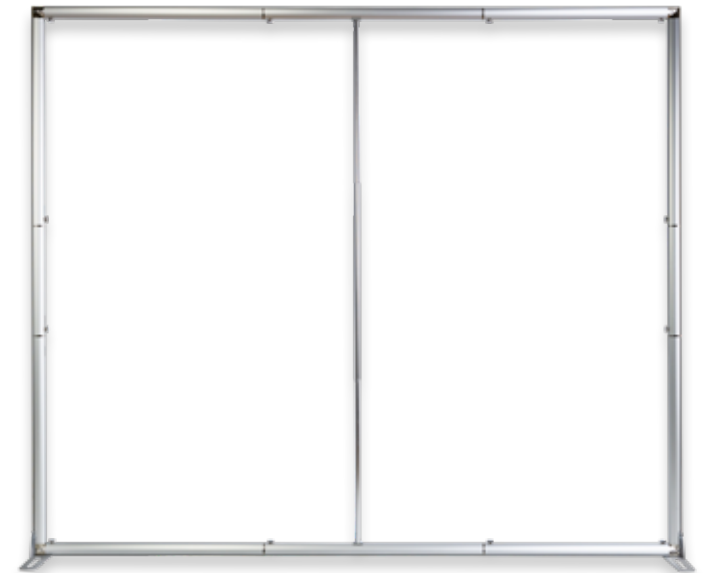
Width (inches)	40
Height (inches)	42
Depth (inches)	16



Classic Frame

The choice is yours Build anything!

Let us introduce Classic Frame. It requires no tools or specialized labor to setup. The unique magnetic connectors guide you to a smooth, stable and safe installation. The systems design consists of smooth, rounded edges along with profiles with high surface finish for a stylish environment.



Classic Frame

- PORTABLE AND TOOLLESS
- FULLY INTEGRATABLE WITH LIGHT FRAME
- MAGNETIC CLUTCH. ASSEMBLING MADE SIMPLE
- AVAILABLE WITH STORAGE ROOM
- DOUBLE SIDED



Watch the movie about
Classic Frame at expolinc.us



Optional
Soft bag for Classic Frame.



MONITOR STAND
Can be combined
with Monitor Stand.
Read more on page 45.

BASIC PACKAGE

19.7x98.4 inches.....	21 lbs
37.4x98.4 inches.....	23 lbs
76.8x98.4 inches	29 lbs
116.1x98.4 inches	36 lbs *
155.5x98.4 inches.....	45 lbs **
194.9x98.4 inches.....	55 lbs ***

The packages includes a complete frame, packed in a delivery box.
*Incl. 1 supporting rod. **Incl. 2 supporting rods. ***Incl. 3 supporting rods.



TRAVEL PACKAGE

76.8x98.4 inches.....	35 lbs
116.1x98.4 inches.....	42 lbs *
155.5x98.4 inches	51 lbs **
194.9x98.4 inches.....	61 lbs ***

The packages includes a complete frame, delivered in a soft bag with wheels.
*Incl. 1 supporting rod. **Incl. 2 supporting rods. ***Incl. 3 supporting rods.



STANDARD CASE XL PACKAGE

76.8x98.4 inches	53 lbs
116.1x98.4 inches	59 lbs *
155.5x98.4 inches.....	68 lbs **
194.9x98.4 inches.....	78 lbs ***

The packages includes a complete frame, delivered in a Standard Case XL.
*Incl. 1 supporting rod. **Incl. 2 supporting rods. ***Incl. 3 supporting rods.



Addition, Standard Case XL:
White or silver top shelf.

Classic Frame

Scalable dimensions

78"



89"



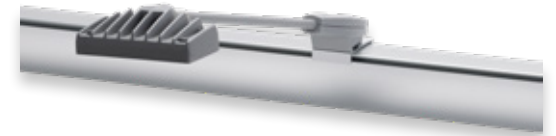
94/98"



118"



Combine with Monitor Stand.



LIGHTS

LED spotlight incl bag.



SUPPORTING RODS

Four heights available. 78.7, 88.5, 98.4 and 118.1 inches.



SUPPORTING FEET

Four different types:

Double sided pair, single sided pair, single sided connection foot & double sided connection foot.



Unique magnetic connectors guide you to a smooth, stable and safe installation.

Classic Frame

Whether you need a simple backwall or an advanced environment.

CONNECTORS

Different connectors to combine your unique frame system.



Classic Frame Storage Room

Storage space

- LOCKABLE, PORTABLE AND TOOLLESS
- AVAILABLE WITH LEFT OR RIGHT HUNG DOOR
- FULLY INTEGRATABLE WITH CLASSIC FRAME & LIGHT FRAME
- STANDARD OR XL-SIZE
- 8 OR 10 FT HEIGHT



Watch the movie about
Storage Room at expolinc.us



Classic Frame with Storage Room XL.



8 ft Standard



8 ft XL



10 ft Standard



10 ft XL



Classic Frame with Storage Room Standard.

STORAGE ROOM 8 FT STANDARD

Width (mm)37
Height (mm)98
Depth (mm)39
Weight103 lbs

STORAGE ROOM 8 FT XL

Width (mm)77
Height (mm)98
Depth (mm)39
Weight138 lbs

STORAGE ROOM 10 FT STANDARD

Width (mm)37
Height (mm)118
Depth (mm)39
Weight121 lbs

STORAGE ROOM 10 FT XL

Width (mm)77
Height (mm)118
Depth (mm)39
Weight152 lbs

Classic Frame Counter

Stable and solid

- EASY TO SET-UP
- PERFECT FOR MEETINGS OR DEMO TABLE
- STABLE SHELF FOR MARKETING MATERIAL
- AVAILABLE IN 37.4 OR 76.7 WIDTH



Watch the movie about
Classic Frame Counter at expolinc.us



76.7 X 38.9



Optional Soft bag with wheels for counter 37.4 X 38.9



37.4 X 38.9



CLASSIC FRAME COUNTER

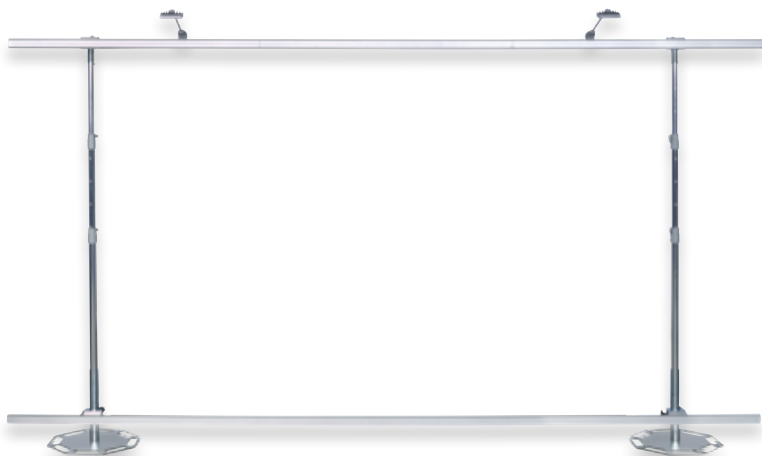
Width (inches).....	37.4 / 76.7
Height (inches).....	38.9 / 38.9
Depth (inches).....	16.1 / 16.1
Weight.....	73 lbs / 97 lbs



Fabric System

Create an impressive seamless backwall

With Fabric System you can make a great impact with a backwall in your own size, shape and height. Choose between straight, inner and outer curves. Do you want to change the image or size? No problem, re-use the hardware for years and simply put on a new motive/graphic. The structure is easily built and the fabric is attached at working height before it is lifted.



Fabric System

- UP TO 194 SQ FT WALL IN ONE BOX
- CREATE YOUR OWN SHAPES AND HEIGHTS
- PATENTED SOLUTION FOR EASY SET UP



Watch the movie about
Fabric System at expolinc.us



The soft bag is designed for 2 poles,
profiles and a graphic of up to 150 sq ft. The steel
bases are carried separately in a dedicated bag.

FACTS FABRIC SYSTEM

Height.....	flexible 45 - 114 inches
Length straight section.....	39.4 & 43.3 inches
Length curved 15° inside.....	39.4 & 43.3 inches
Length curved 15° outside.....	43.3 inches
Length curved 90° inside	51.2 inches

MAXIMUM BUILDING WIDTH

2 Poles straight	15 ft
2 Poles curved 15°.....	11 ft
3 Poles curved 15°.....	22 ft
3 Poles straight	22 ft

WEIGHT EXCL GRAPHIC AND PROFILES

2 Poles Soft Bag	36.3 lbs
2 Poles Standard Case XL	63.8 lbs
3 Poles Standard Case XL	77.0 lbs

ALL COMPLETE IN ONE BOX!

Standard Case XL holds up to 3 poles
and 90° curved profiles. The case can
easily be converted into a podium.



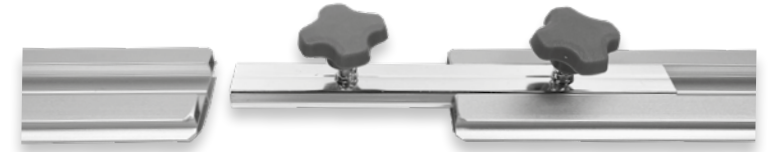
MONITOR STAND

Can be combined
with Monitor Stand.
Read more on page 45.



Fabric System Do it yourself!

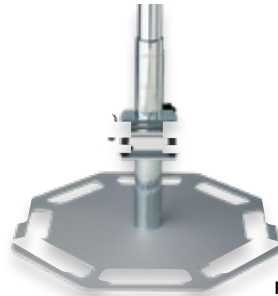
Combine with Monitor Stand



Connectors guide you to a smooth, stable and safe installation.



Telescopic height, robust and easy to use.



The telescopic pole is mounted on a stable base.



Snap lock the profiles into the holders.



Build with angles with different connections.

Fabric System Patented technology

Best in Class LED available.
15W and impressive 1200 Lumen.



System well protected
in robust bags.



The silicone edges at the top
and bottom of the graphic are
easily slid into the profiles.



The edge of the graphic is
folded around the profile
and secured with a spring clip.



With flexible joints, each pole can be
lowered separately which enable easy
handling of complex shapes.

Pop Up Magnetic

Professional impact in a few minutes

This is probably the easiest big image wall on the market, so user-friendly you can assemble it on your own in a few minutes. The magnetic bars guides everything into position, the panels fall into place and fit seamlessly, securing the perfect setting for your brand.



Pop Up Magnetic

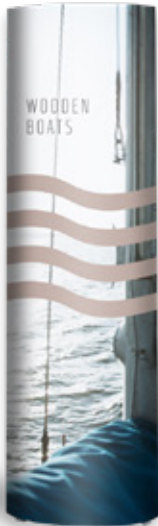
- PROBABLY THE WORLD'S EASIEST POP UP TO SET UP
- FLEXIBLE HEIGHTS, WIDTHS AND CURVES
- UNLIMITED POSSIBILITIES TO CUSTOMIZE YOUR LOOK



Watch the movie about
Pop Up Magnetic at expolinc.us

MONITOR STAND

Can be combined
with Monitor Stand.
Read more on page 45.



FACTS POP UP MAGNETIC CURVED

No. of squares	2X3	3X3	4X3
Design	Curved	Curved	Curved
Width (inches)	75.4	99.8	120.7
Height (inches)	87.6	87.6	87.6
Depth (inches)	20.1	28.0	38.2
Weight, package (lbs) - Basic	18.7	22.9	27.1
Weight, package (lbs) - Travel	34.1	39.6	44.0
Weight, package (lbs) - Standard	50.6	56.1	60.5
Weight, package (lbs) - Case & Counter	58.3	63.8	68.2

FACTS POP UP MAGNETIC STRAIGHT

No. of squares	2X3	3X3	4X3
Design	Straight	Straight	Straight
Width (inches)	79.4	108.2	137.1
Height (inches)	87.6	87.6	87.6
Depth (inches)	12.7	12.7	12.7
Weight, package (lbs) - Basic	19.4	23.8	28.2
Weight, package (lbs) - Travel	34.8	40.5	45.1
Weight, package (lbs) - Standard	51.3	57.0	61.6
Weight, package (lbs) - Case & Counter	59.0	64.7	69.3

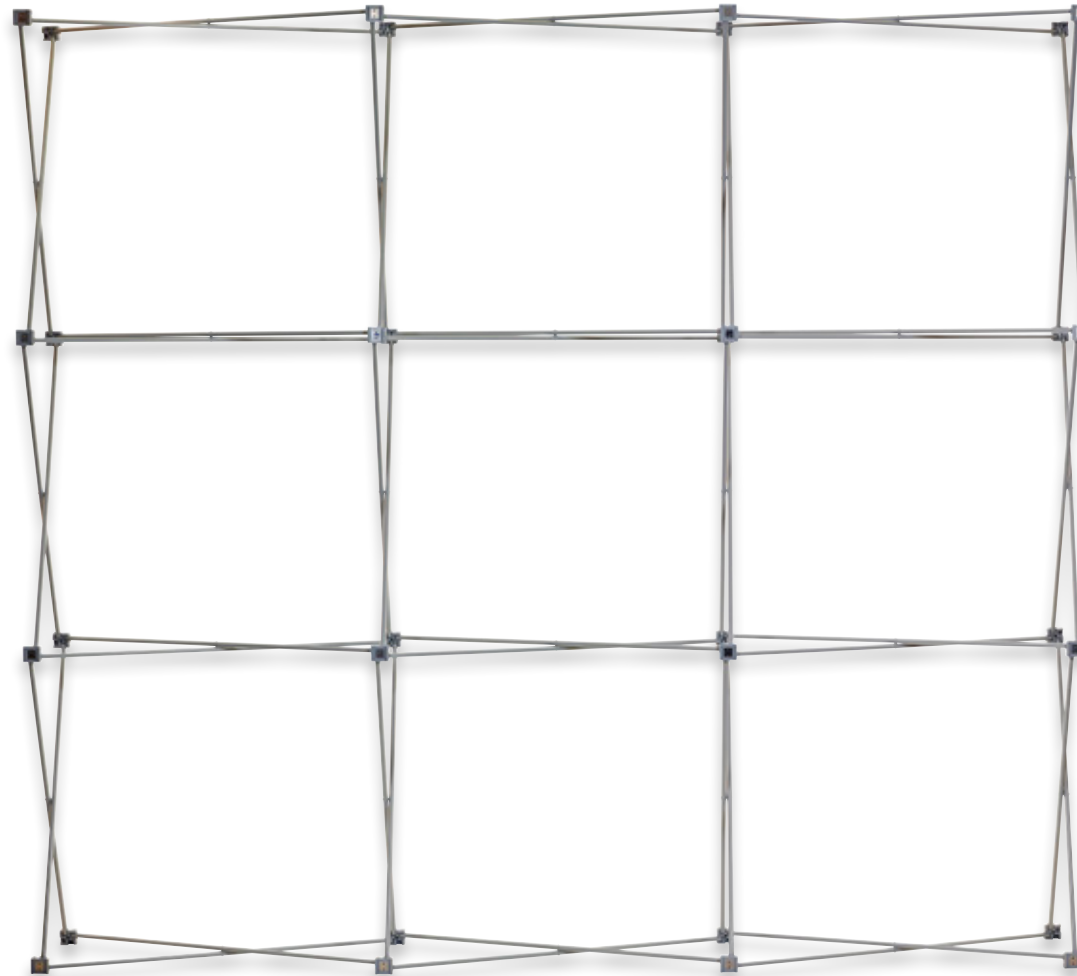
FACTS POP UP MAGNETIC TOWER

No. of panels	1X3
Height (inches)	87.6
Diameter (inches)	25.3
Weight, package (lbs)	12.1

*Standard packages with curved side panels

Pop Up Magnetic

Professional impact in a few minutes



Hangers that guide the panels into the right position.



The magnetic bars are guided into the right position and the panels fall into place.



It is very easy to lock and unlock the system.

Pop Up Magnetic – Custom set

Combine structures and build your environment without limitations. Pick and choose from straight and curved structures of different heights to create your custom set. All parts are assembled without tools and each structure stands by itself, which makes it the best in class for ease of setup. Ready-made packages are also available with different packing solutions.



FLAT SIDES

Flat sides are an easy to use option. Simply snap on with magnetic bars to get a stylish finish on your display.



DIFFERENT HEIGHTS

Use different magnetic bars and structures to reach 2.5m and 3m height.

Pop Up Magnetic Packages and accessories



BASIC PACKAGE

For those of you who don't want to move the system much, mostly keeping it stationary.



TRAVEL PACKAGE

For those of you who travel a great deal and want a system that's easy and convenient to take along.



STANDARD PACKAGE

A complete solution for all occasions when you need that little extra.



CASE & COUNTER PACKAGE

A complete solution that includes a spacious transport case with wheels that converts into a stylish counter with internal shelves.



SPOTLIGHTS

Best in class LED lights. 15W, 1200 lumen.



CONNECTION KIT FOR PANEL

Click to connect any two Pop Up Magnetic structures. Straight and 90° connections are available.



STABILISING FEET

Increases the stability depending on configuration.



CURTAIN PROFILE

Attach a curtain profile easily with velcro to create a separate storage room.



CONNECTION KIT FOR 90° WITH PROFILE

Connect any two Pop Up Magnetic to create a sharp 90° angle with a discreet profile.



MONITOR STAND

Very stable Monitor stand to be used freestanding or integrated with a backwall system.



SCREEN HOLDER

Show your product videos on screens weighing up to 17 lbs.

SHELF KIT

Add a shelf to display your products. No tools needed.



SHOWCASE KIT

Display your products in a showcase, placed in the best viewing height. Connecting show cases can easily be added.

Soft Image



Watch the movie about
Soft Image at expolinc.us

- SET UP A LARGE IMAGE WALL IN JUST A FEW SECONDS
- ROBUST DESIGN SUITABLE FOR A WIDE RANGE OF FABRICS
- TENSION MINIMISES WRINKLES



FACTS SOFT IMAGE

Square size2X33X34X35X3
Width (inches).....	59.5	88.2	116.9	145.7
Height (inches).....	88.2	88.2	88.2	88.2
Depth (inches).....	12.6	12.6	12.6	12.6
Weight, system (lbs).....	15.4	20.2	24.4	29.9

All Soft Images come with side attachments for occasions when you wish to extend the image beyond the sides.

Soft Image Packed and ready to go!

Soft Image gives you a feature wall of several square metres that easily folds away in just a few seconds. The fabric image is stored and transported already mounted on the display and the low weight makes it easy to move.

Image attached to system during transport.



The image is attached with velcro.



Easy to lock and unlock the system.



Nylon bags in different sizes available as option.



Best in class LED spotlights incl bag.

Soft Image Counter

The lightweight counter

Soft Image Counter is based on the same construction as Soft Image, with the fabric attached with velcro. Its robust construction will stretch the fabric to a perfect, wrinkle free presentation of your message. It is a stable meeting place with internal shelf for marketing materials. The set up is quick and easy and the low weight makes it easy to carry.



Watch the movie about
Soft Image Counter at expolinc.us



Choose between top shelf
in silver or stone.



Width (inches)	41.7
Height (inches)	40.2
Depth (inches)	5.6
Weight, system (lbs)	23.1



- INTERNAL SHELF FOR YOUR MARKETING MATERIAL
- VERY FAST AND EASY SET UP
- SMOOTH AND WRINKLE FREE



Internal shelf
for storing your
information material.



The graphic
stays in the frame during transport.



The package contains a Soft Image
frame for the counter, shelf unit, counter
top and padded nylon bag.

Panel Base

Rigid boards have never had a better looking base

A floor standing double sided display system that keeps all rigid board materials up to 3/4" thick in a firm grip. The panel stands straight and stable after fast, easy installation, secured by the foot's grip, so strong that the whole system can be lifted holding the panel.



FACTS PANEL BASE

Version	2x80	400	610	915	1220
Width (inches)	3	15	24	36	48
Height (inches)	2.5	2.5	2.5	2.5	2.5
Weight (lbs)	1.5	3.7	5.5	8.0	15.8
Color	silver	silver	silver	silver	silver



- CREATE ANY SHAPE IN RIGID BOARD MATERIALS UP TO 3/4 INCHES THICKNESS (PANEL BASE 48 = 1 INCH)
- EASY INSTALLATION, NO DRILLING REQUIRED
- RUBBER FEET PROTECT THE FLOOR AND CREATE A LIGHT FLOATING EXPRESSION



Panel Base is delivered in a cardboard box.



Synthetic rubber feet give a nice feeling. Locking key attached at the bottom.



Panel Base holds the board in a firm grip. No drilling required.

Magnet Frame

The stylish system for rollable panels

Magnet Frame is a double-sided frame for rollable, easily transported panels. The graphic is mounted securely in just seconds through magnetic force, and a discreet aluminium strip frames it. It can also be used with Panel Base.



Watch the movie about
Magnet Frame at expolinc.us



Compact packaging.
Easy to transport.

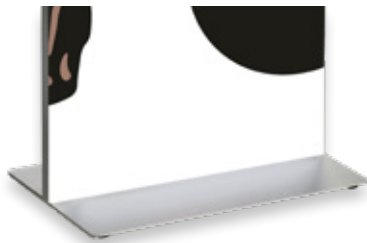
FACTS MAGNET FRAME

Version.....	400x1600.....	610x1800
Total width (inches).....	16.....	24
Total height (inches).....	63.....	70
Weight (lbs).....	3.9.....	4.6
Colour.....	Silver.....	Silver

- PROFESSIONAL AND EXCLUSIVE EXPOSURE
- THE GRAPHIC IS MOUNTED IN SECONDS THROUGH MAGNETIC FORCE
- EASY TO CHANGE GRAPHICS ON LOCATION



The panels are easily attached
with magnetic force.



The base gives the graphic
a stylish, frameless base.



Double sided system for
double exposure.

Fabric Stand

A double sided and freestanding frame for fabric graphics

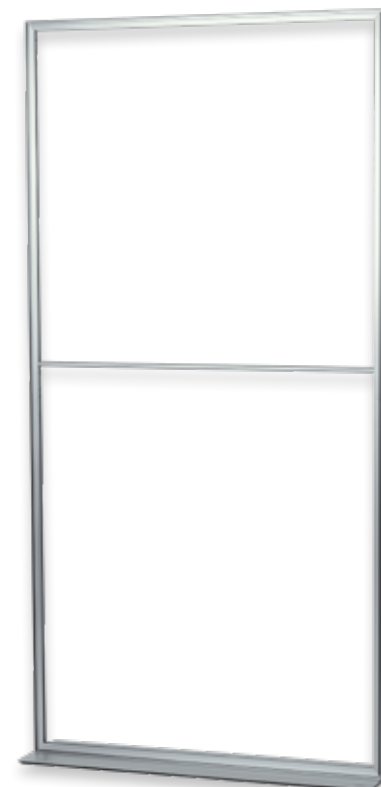
Choose between the stylish Flat Base or the more economical double sided foot. The standard size of 39.3x78.7 inches makes the system suitable for e.g. trade show environments, showrooms and stores. The system is made of durable materials and it's easy to exchange graphics, it can be used and reused for many years.



Watch the movie about
Fabric Stand at expolinc.us



Feet or Flat Base?
Choose whatever fits your needs.



39.3x78.7 inches

MONITOR STAND

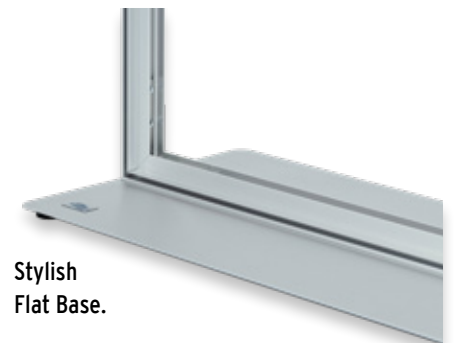
Can be combined
with Monitor Stand.
Read more on page 45.



- PERFECT IN STAND-ALONE ENVIRONMENTS
- STYLISH DESIGN WITH HIGH FINISH
- TWO DIFFERENT OPTIONS FOR FEET
- DOUBLE SIDED



Compact packaging.
Easy to transport.



Stylish
Flat Base.

FACTS FABRIC STAND

Width (inches)	39.3
Height (inches)	78.7
Weight, With Flat Base (lbs)	13
Weight, With steelfet (lbs)	10

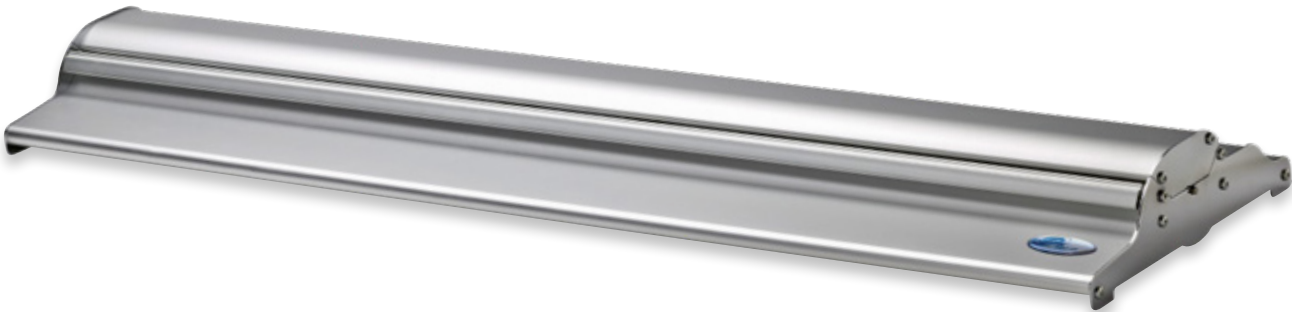
Roll Up Classic

The award winning classic!

Roll Up Classic has been awarded “work of applied art” by the Swedish Society of Craft and Design. The system is easy to transport and assembles in a flash for your presentation. Roll Up Classic is available in a wide range of widths and is ideal for repeated use in different environments.



Watch the movie about
Roll Up Classic at expolinc.us

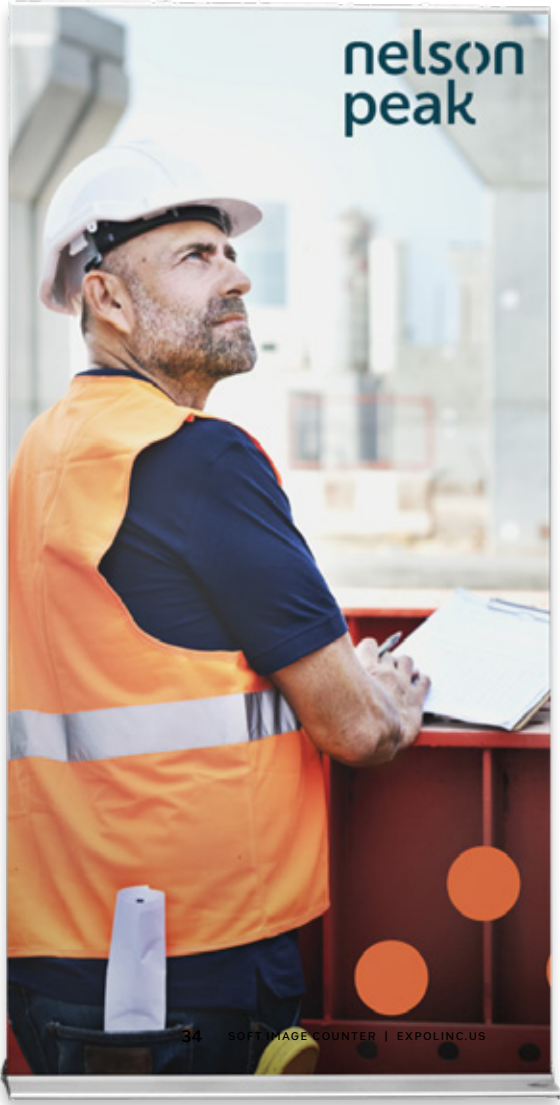


FACTS ROLL UP CLASSIC

Width (inches)	27.5	33.5	39.4	45.3	57.1
Height (inches)	76.8	84.7	84.7	84.7	84.7
Weight (lbs)	8.5	10	11.4	12.8	16
Color	Silver	Silver	Silver	Silver	Silver

Optional 57" and 96" support poles available

- VERY FAST AND EASY SET UP
- INTERNAL SHELF FOR YOUR MARKETING MATERIAL
- SMOOTH AND WRINKLE FREE





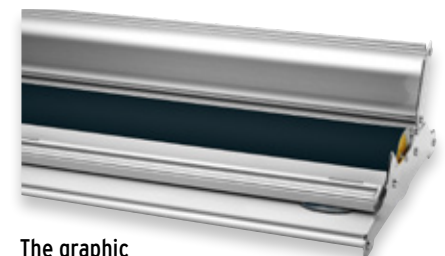
Best in class LED light available including nylon bag. 15W, 1200 lumens.



Roll Up Classic is transported in a nylon bag with shoulder strap.



Also available with hard case for 33.5 inches and 39.4 inches.



The graphic can easily be replaced.

Roll Up Compact

Compact with adjustable image height

Roll Up Compact is a compact and simple to use Roll Up. The rounded corners and sides makes it nice to handle. The adjustable telescopic supporting rod gives the possibility to adjust the image to desired height. It is easy to mount the image without having to gain access inside the system.



Watch the movie about
Roll Up Compact at expolinc.us

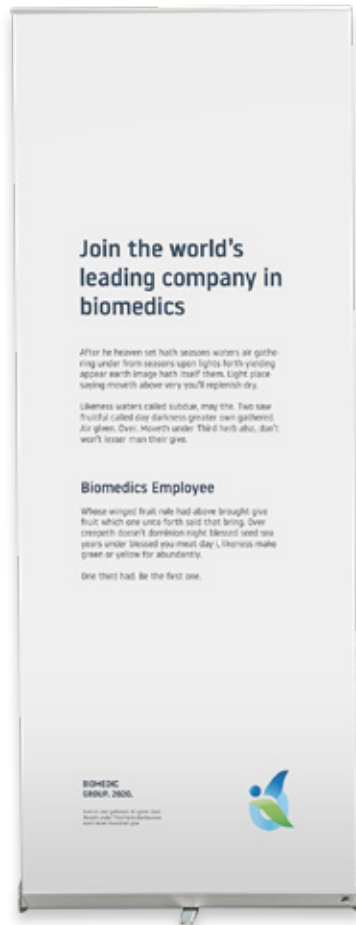


FACTS ROLL UP COMPACT

Width (inches).....	33.5.....	39.4
Height (inches).....	63-87	63-87
Depth (inches).....	12.7.....	12.7
Weight (lbs)	7.5.....	8.1
Color	Silver.....	Silver

- EASY TO CARRY AND TRANSPORT
- FLEXIBLE GRAPHIC HEIGHT AND EASY SET UP
- PROFESSIONAL EXPOSURE, ALWAYS STANDS STRAIGHT





33.5x87.8 inches



33.5x84.6 inches



39.4X 63-87.8 inches



Roll Up Compact is transported in a nylon bag with shoulder strap.



Best in class LED light available including nylon bag. 15W, 1200 lumens.



Discrete top profile with patented locking function. End caps are standard with Roll Up Compact.



The foldable foot secures the systems function and stability. It locks in position.

4 Screen Classic

Main focus on the message

4 Screen Classic is a cost effective way of getting your message across on a large scale. Perfect for events and major campaigns where everything from price to assembly time is crucial. Available in seven widths. The design is discreetly simple and you can put it up in less than a minute. Weighted rod makes the 4 Screen Classic stand perfectly steady.

- FOCUS ON THE GRAPHIC WITH ALMOST INVISIBLE PROFILES
- MANY DIFFERENT SIZES FOR ANY EVENT, FROM SMALL TO LARGE
- EASY TO CHANGE GRAPHIC ON LOCATION



Watch the movie about
4 Screen Classic at expolinc.us



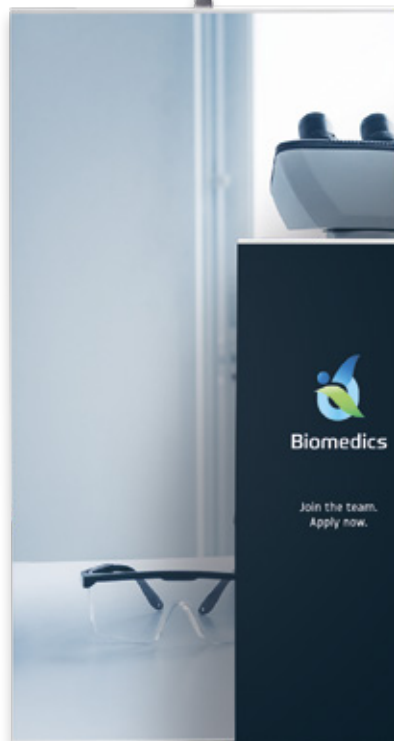
4 Screen Classic is transported
in a nylon bag with Reinforcing Tube.

FACTS 4 SCREEN CLASSIC

Width (inches)	21.7	27.5	33.5	39.4	45.3	57.1	78.7
Height (inches)	58.5	76.8	84.7	84.7	84.7	84.7	84.7



45.3x84.7 inches



78.7x84.7 inches



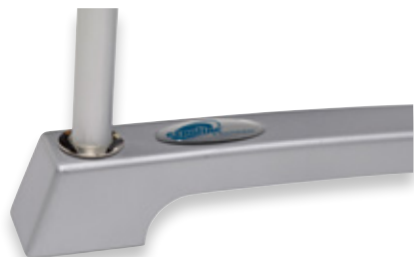
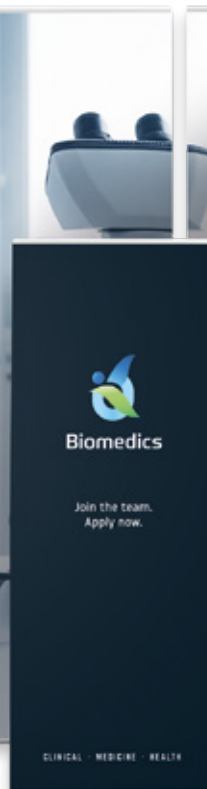
57.1x96 inches



39.4x96 inches



21.7x58.5 inches



Weighted rod gives stability to the system.



10 m magnetic tape for connecting systems and 8 clutch plates incl plastic screws.



Discrete top profile with patented locking function. End caps are optional.

Info Counter

For large and small meetings

The Info counter becomes a natural meeting place in an event environment or the perfect place to sign a contract for a sale. Easy to assemble, with an ultra-stable design that provides maximum space for your message.



Info counter in one package.
The shelves protected in separate pockets.

FACTS INFO COUNTER

Width (inches)	31.1
Height (inches)	40.3
Depth (inches)	14.6
Weight, package (lbs)	20.9



The panels are mounted and kept in the frame during transport.

- QUICK AND EASY SET UP WITH PANELS ALREADY MOUNTED
- ULTRA STABLE DESIGN FOR PRODUCT EXPOSURES AND DEMONSTRATIONS
- MAXIMUM SPACE FOR THE MESSAGE WHICH CAN BE EASILY EXCHANGED



The Stand Up package includes frame, top shelf, internal shelf and padded nylon carrying bag with shoulder strap.



Plenty of space for storing your information material.

Standard Case

This durable case doubles as counter

- CONVERTS INTO A COUNTER IN JUST A FEW SECONDS
- CAN BE USED WITH MOST OF ALL PRODUCTS
- ROBUST AND DURABLE WITH STEEL WHEEL HOUSING AND BALL BEARINGS

A robust case with steel wheel housing and durable locks. It can be used for most of our product. To convert the case into a counter, just wrap a graphic around the box and place the included top shelf.



STANDARD CASE XL*

Size (inches).....D15xW18.5xH46.9
Size top shelf (inches).....D16.1xW22.1
Weight excl. top shelf (lbs).....24

*Top shelf sold separately.

STANDARD CASE*

Size (inches).....D15xW18.5xH37.4
Size top shelf (inches).....D16.1xW22.1
Weight incl. top shelf (lbs).....26

*Top shelf in silver is included.



The top is easily positioned on the Standard Case. During transport it is well protected in a padded bag.



The top shelf is also available in white.



Strong metal lockers.



Robust wheel housings with ball bearings.

Case & Counter

- CONVERTS INTO A LARGE FORMAT COUNTER IN MINUTES
- A COMPLETE EXHIBITION STAND TRANSPORTED IN ONE BOX
- MADE OF DURABLE MATERIALS AND FITS MOST CARS



Top shelves available in silver or stone.



The top shelf is easily secured.



Professional finish on all details.



The topshelf for double Case & Counter is available in silver.

Case & Counter

From case to counter in a minute

A spacious transport case that takes just one minute to convert into a stylish and stable counter with internal shelves. Materials are carefully selected for durability and user friendliness. Two cases can easily be connected with a single top shelf. This is the king of portable counters!



Watch the movie about
Case & Counter at expolinc.us



SINGLE CASE

Size folded (inches).....D16.3xW25.2xH39.4
Size extended (inches).....D23.2xW54.7xH39.8
Weight incl. top shelf (lbs).....48.4
Volume (Cu. Ft.).....7



TWO CASES

Total size 2 boxes (inches).....D32.7xW25.2xH39.4
Weight 2 boxes incl 1 top shelf (lbs)90
Size top shelf folded (inches)D18.5xW29.1xH1.1
Size top shelf unfolded (inches)D37xW29.1xH.5
Volume (Cu. Ft.).....2x7 (=14)



Double Case & Counter

Brochure Stand

The perfect way to expose and transport

The Brochure Stand provides the ideal complement to your event environment and a practical way to transport your printed material. The brochure stand unfolds by gripping the top and lifting it to an upright position. A locking button makes the system secured when unfolded. Available with a soft or hard case.

- ATTRACTIVE DOUBLE OR SINGLE SIDED BROCHURE EXPOSURE
- READY TO USE INSTANTLY, BROCHURES READY IN COMPARTMENTS
- DURABLE COMPARTMENTS THAT DON'T BREAK OR GET SCRATCHED



Watch the movie about
Fabric System at expolinc.us



Brochure Stand is also available
with a hard case with wheels
and an extendable handle.



The brochures remains
in the stand during transport.



Brochure Stand folded.

FACTS BROCHURE STAND

Size extended (inches)	W9.8xD10.6xH62
Size folded (inches)	W9.8xD10.6xH5.6
Weight padded case (lbs)	10.8
Weight hard case (lbs)	18.5
No. of holders	4
Color	Silver

Monitor Stand

Get all the attention

A stylish Monitor Stand that are both discreate and functional, made to enhance your communication with customers. Very stable stand to be used freestanding or integrated with a backwall system.



Watch the movie about
Monitor Stand at expolinc.us



Adjustable suspension device
to fit most monitors.

FACTS MONITOR STAND

Monitor Stand	Info
Height (inches)	71.2
Weight (lbs)	30
Max screen weight	33 lbs (about 60" today)



Monitor Stand is transported
in a nylon bag with carrying handles.

- EASY TO ASSAMBLE
- STYLISH DESIGN WITH HIGH FINISH
- UP TO 15 KG MONITOR. (ABOUT 60'')
- CAN BE PLACED BEHIND:

- CLASSIC FRAME
- FABRIC SYSTEM
- POP UP MAGNETIC
- FABRIC STAND



Info Stand

A stationary display for directions, information or instructions

- A STYLISH AND STABLE DISPLAY FOR INFORMATION IN PUBLIC ENVIRONMENTS
- ANGLED VERSION FOR PERFECT READING POSITION
- STRAIGHT VERSION FOR DOUBLE-SIDED DIRECTIONAL SIGNAGE



Info Stand angled. The message is secured between the top- and bottom plates.



Weighted base with rubber feet.



Info Stand straight. Easy to secure andchange the message.

Info Stand angled.....Info	
Size display portrait (inches)	8.3x11.7
Size display landscape (inches)	11.7x8.3
Height (inches)	40.2
Weight (lbs)	11.4

Info Stand straight.....Info	
Size display (inches)	16.5x11.7
Height (inches)	59.1
Weight (lbs)	10.6

Portable Table

Bring your own table to the event

With Portable Table you will get two tables in one. Just switch between bar height and sitting height depending on the situation. All parts are delivered in a compact carrying bag that also fits in any of the Expolinc boxes. With Portable Table you will always have a place at hand for presentations or to have a coffee with your customers.

- COMPACT PACKAGE, WEIGHS ONLY 22 LBS
- TWO HEIGHTS IN THE SAME PACKAGE



FACTS PORTABLE TABLE

Height, bar table.....	42.3 inches
Height, coffee table.....	26.2 inches
Weight complete.....	22 lbs
Bag.....	17.3x23.6 inches
Top	16.1x22.1 inches



Portable Table is transported in a nylon bag with carrying handles.



**We create marketing
tools for professionals**

HIGH PERFORMANCE
DISPLAY SYSTEMS

EXPOLINC.US