



High performance display system



Since 1986, we have designed and crafted high performance display systems with passion behind every detail. Every part is designed in Sweden by our dedicated engineers focusing on simplicity, high tolerance, durability and appearance.

We are committed to deliver superior products made by materials such as specified aluminium with high surface finish, cold formed steel and high quality thermoplastics.



Classic Frame 2.0

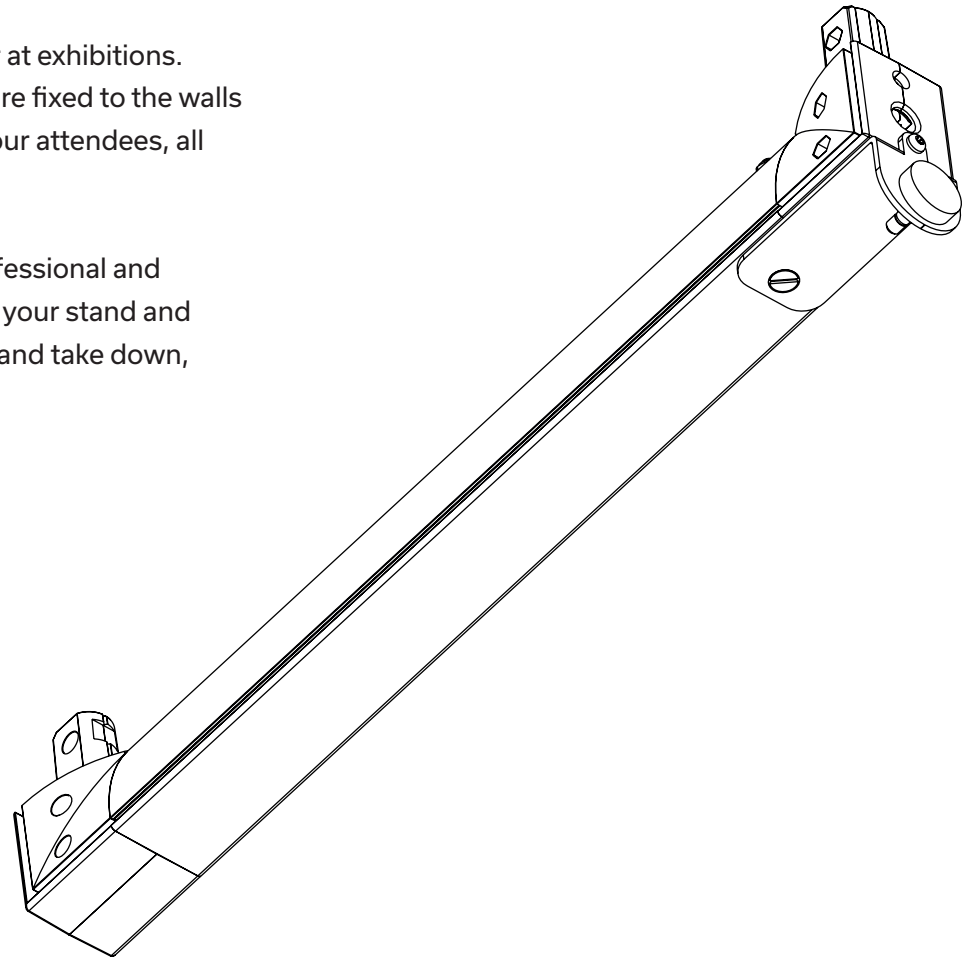
- Reach New Heights!

Introducing the newest additions to the Expolinc family - the Sky Bridge! and the Header Kit. These innovative products are designed to elevate your display system to the next level and help you stand out from the competition at Trade shows.

The Sky Bridge is a game-changer for anyone looking to build walls above the floor at exhibitions. With its sturdy and reliable construction, it allows you to create custom walls that are fixed to the walls of the venue. This means you can create a more immersive and private space for your attendees, all while maintaining a professional and polished appearance.

The Header kit is the perfect solution for showcasing your company's logo in a professional and eye-catching way. With its sleek and modern design, it easily attaches to the top of your stand and draws the attention of attendees from all angles. Plus, it's incredibly easy to set up and take down, making it a convenient addition to your display system.

The Classic Frame 2.0 - Your keys to success in standing out from the crowd!



The Covered front

8x3m - 24m²



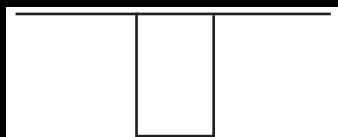
Recommended two people
during set up.



3,5m height

Price:

LAYOUT



The system fits in:
5 pcs Standard Case XL



The set up time is approx:
2,5h

The Small Bridge

5x3m – 15m²



Recommended two people
during set up.

2,5m height



Price:

LAYOUT



The system fits in:
4 pcs Standard Case XL



The set up time is approx:
3h

The Small Center Bridge

6x2m - 12m²



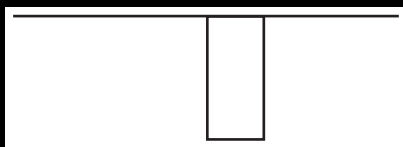
Recommended two people during set up.

3m height



Price:

LAYOUT



The system fits in:
4 pcs Standard Case XL



The set up time is approx:
3h

The Small U

3x2m - 6m²



Recommended two people during set up.



2,5m height

Price:

LAYOUT



The system fits in:
3 pcs Standard Case XL + 1 pc Monitor Stand with bag



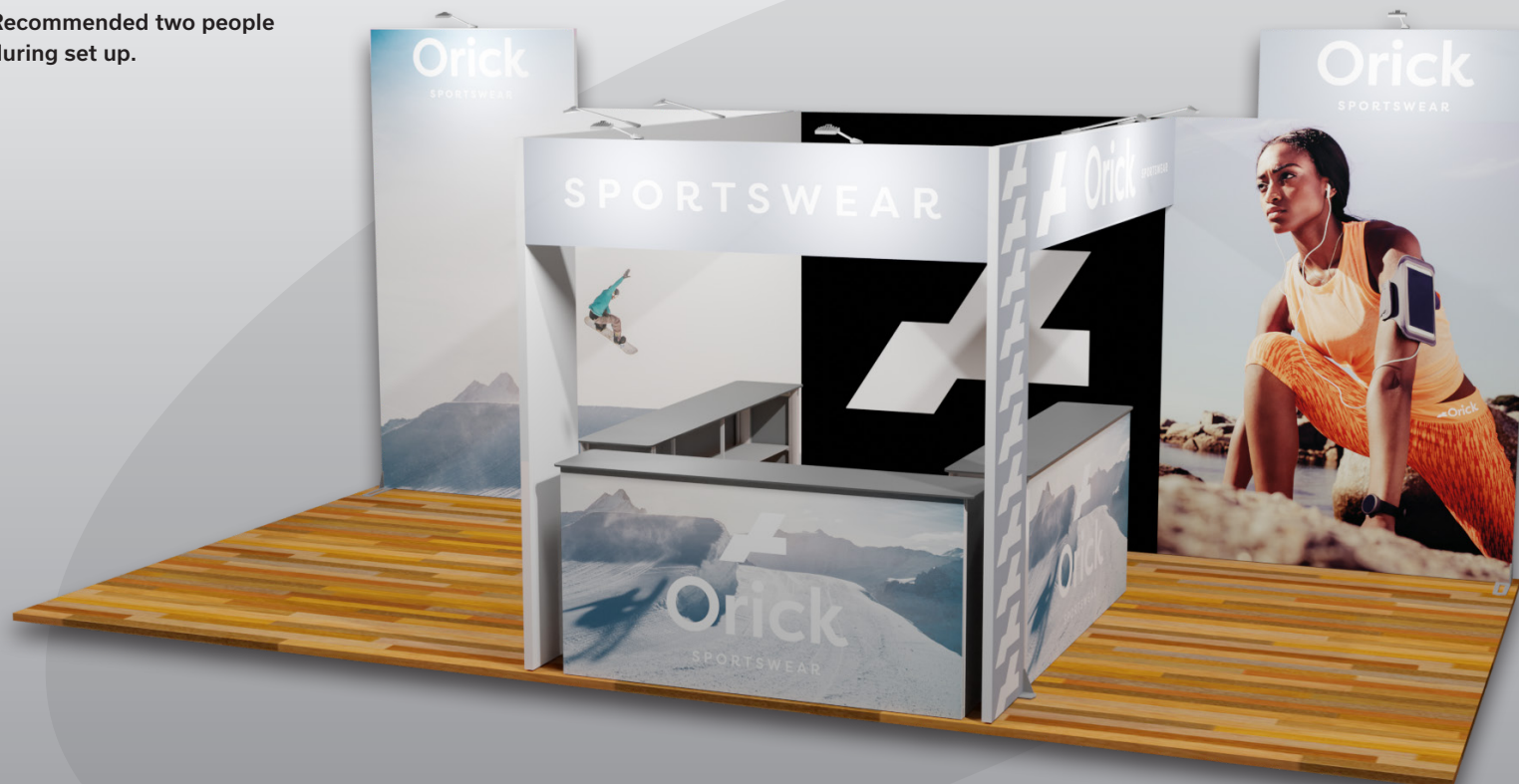
The set up time is approx:
3h

The Bar

7x4m - 28m²



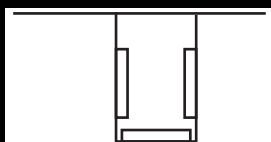
Recommended two people
during set up.



3m height

Price:

LAYOUT



The system fits in:
8 pcs Standard Case XL (1 EUR pallet)



The set up time is approx:
5h

The Big And Bright (with Light Frames)

11x3m - 33m²



Recommended three people during set up.



3m height

Price:

LAYOUT



The system fits in:
8 pcs Standard Case XL + 2 accessory bags (1 EUR pallet)



The set up time is approx:
6h



Safety tested and approved by Intertek according to:
European Union Standards (CE):
IEC 60598-2-1:2017+AL, EN 60598-2:2015+AL, EN 60598-2-1:2019, IEC 60598-1:2014/AMD1:2017, IEC 60335-1:2010, IEC 60471:2006



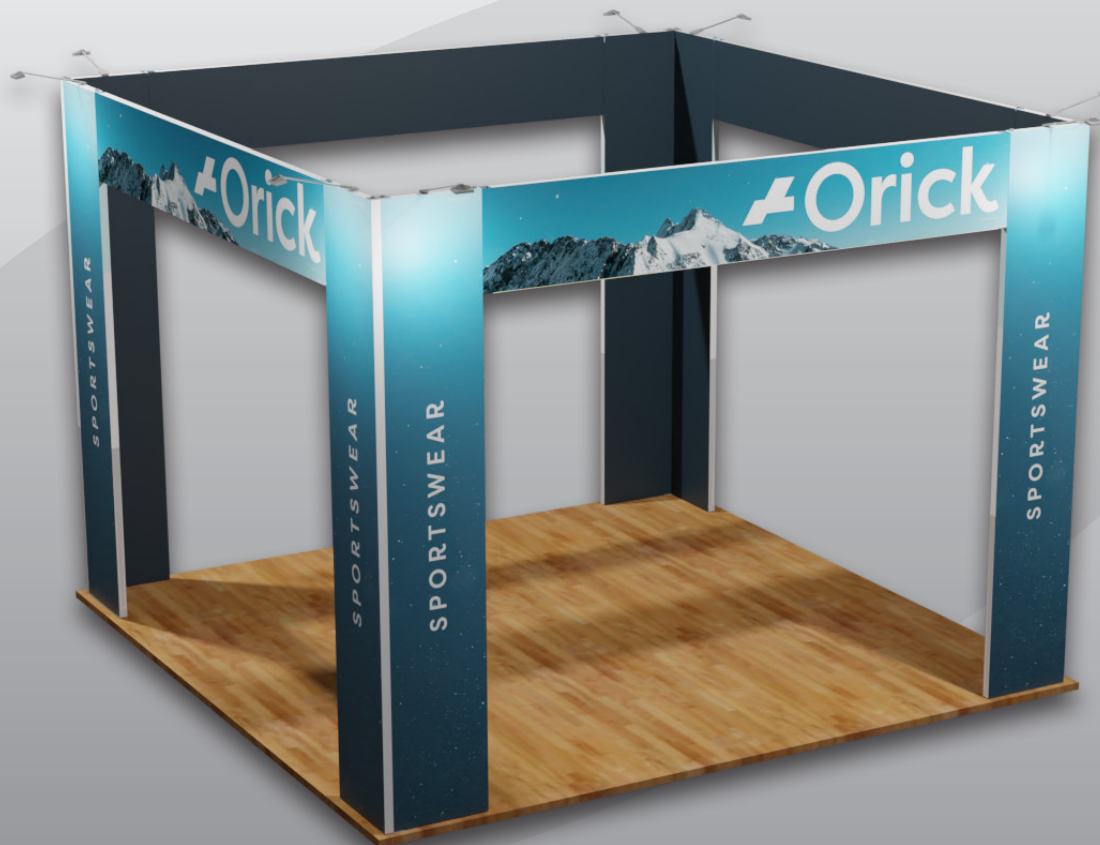
Safety tested and approved by Intertek according to:
North American Standards (ETL):
CSA C22.2 No. 250.0-2008 I.E.4, UL 153:2014 E613-R27, A1:2018

The Pavilion

4x4m - 16m²



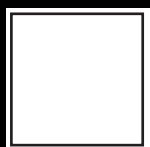
Recommended two people
during set up.



3m height

Price:

LAYOUT



The system fits in:
5 pcs Standard Case XL



The set up time is approx:
4h

The Meeting Room

8x4m – 32m²



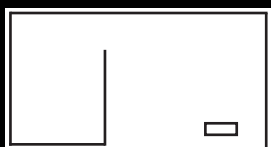
Recommended two people
during set up.



3m height

Price:

LAYOUT



The system fits in:
7pcs Standard Case XL



The set up time is approx:
4h

11x8m - 88m²



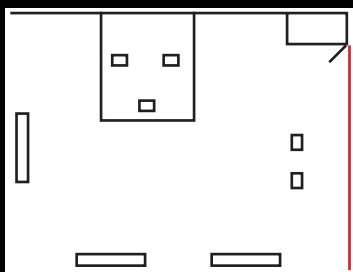
Recommended four people during set up.



3,5m height

Price:

LAYOUT



**The system fits in:
(2 EUR pallets)**



The set up time is approx:
8h



Safety tested and approved by Intertek according to:
European Union Standards (CE):
IEC 60598-2-1:1979+A1, EN 60598-2-1:2015+A1, EN 60598-2-1:1989, IEC 60598-1:2014 (AMD1:2017), IEC 62035-1:2014
IEC 62471:2006



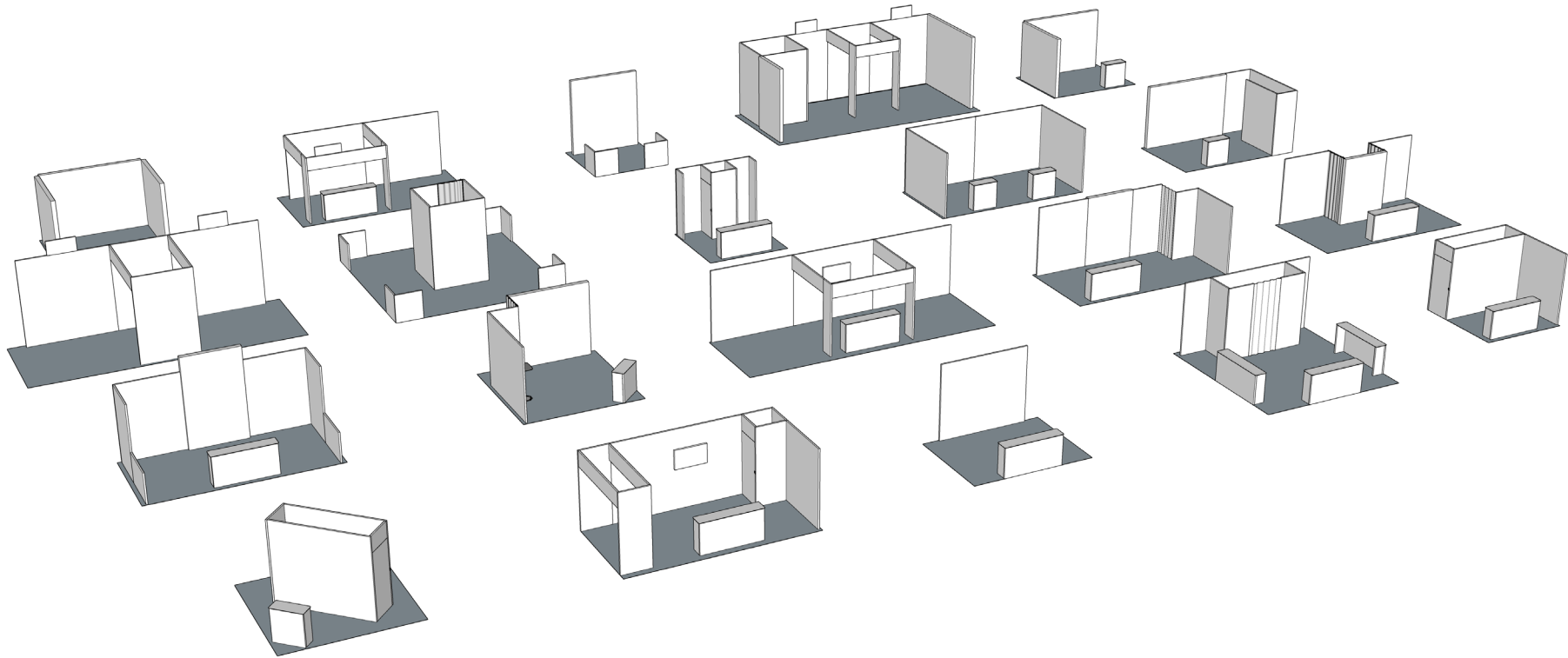
Safety tested and approved by Intertek according to:
North American Standards (ETL):
CSA C22.2 #250.0:2018 Ed 4, UL 153:2014 Ed13+R27 Jul2018

More configurations

Combine Light Frame and Classic Frame and create amazing environments, for all opportunities. Build various heights and widths in different combinations in only a few steps. Reuse and resize for your next event, the only thing you might need to replace is the graphic. This is what we call sustainable and flexible!

Do you have different requirements or demands?

Please contact your dealer and they will help you!





We create marketing tools for professionals

HIGH PERFORMANCE
DISPLAY SYSTEMS

EXPOLINC.COM